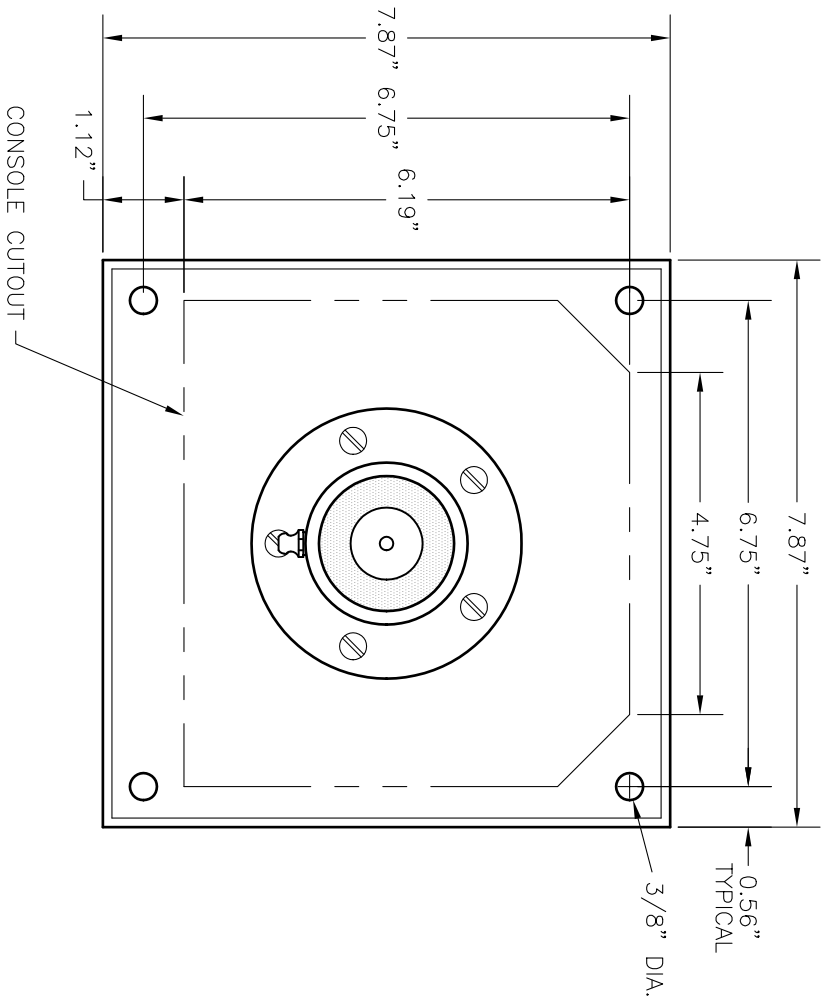
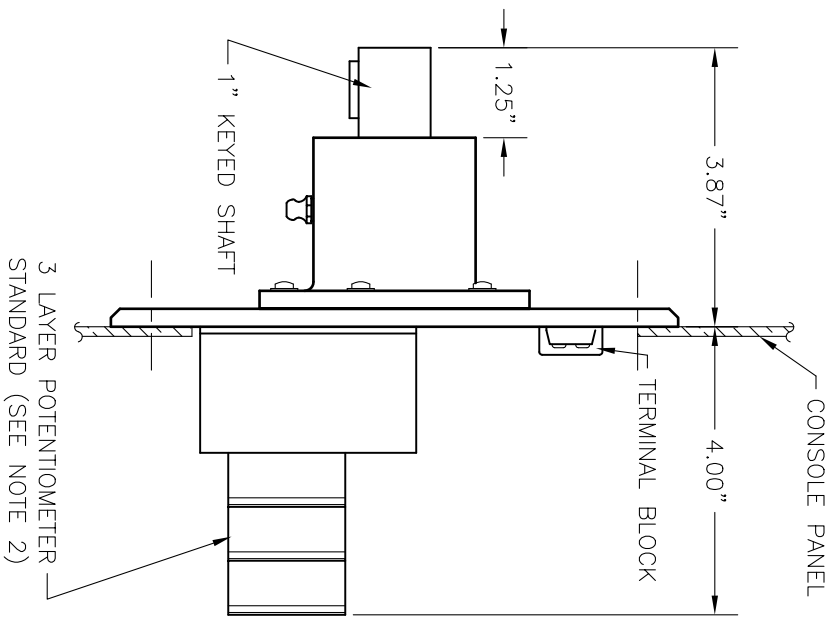


**GENERAL NOTES**

1. WHEEL UNIT HAS A 1" DIA. STAINLESS STEEL SHAFT, KEYPED FOR A STANDARD 808 WOODRUFF KEY, TAPPED TO ACCEPT A 1/4-20 MOUNTING BOLT. WHEEL SHOULD HAVE 1" DIA. BORE WITH 1/4 X 1/8 KEYWAY.
2. CLEARANCE DEPTH DEPENDS ON NUMBER OF LAYERS ON POTENTIOMETER, APPROX. 3/4" PER LAYER.
3. PLEASE SPECIFY NUMBER OF LAYERS NEEDED ON POTENTIOMETER WHEN ORDERING REPLACEMENT UNITS.



**FRONT VIEW**



**SIDE VIEW**

**EMI**  
ENGINE MONITOR, INC.  
179 HICKORY AVE.  
HARRAHAN, LA 70123

PHONE: (504) 737-3172  
FAX: (504) 737-5576  
E-MAIL: emonito@emi-marine.com  
WEBSITE: www.emi-marine.com

**PLOTHOUSE FULL FOLLOW-UP  
STEERING WHEEL UNIT**

DWG: **46730**  
DATE: 6/30/00 SHEET 1 REV: - FILE: 46730

THIS DRAWING CONTAINS PROPRIETARY INFORMATION AND DESIGNS OWNED BY ENGINE MONITOR, INC. (E.M.I.). ALL DESIGNS, MANUFACTURING, REPRODUCTION, USE, PATENT RIGHTS AND SALES RIGHTS REGARDING THE SAME ARE EXPRESSLY RESERVED BY ENGINE MONITOR, INC.

This document was created with Win2PDF available at <http://www.daneprairie.com>.  
The unregistered version of Win2PDF is for evaluation or non-commercial use only.